



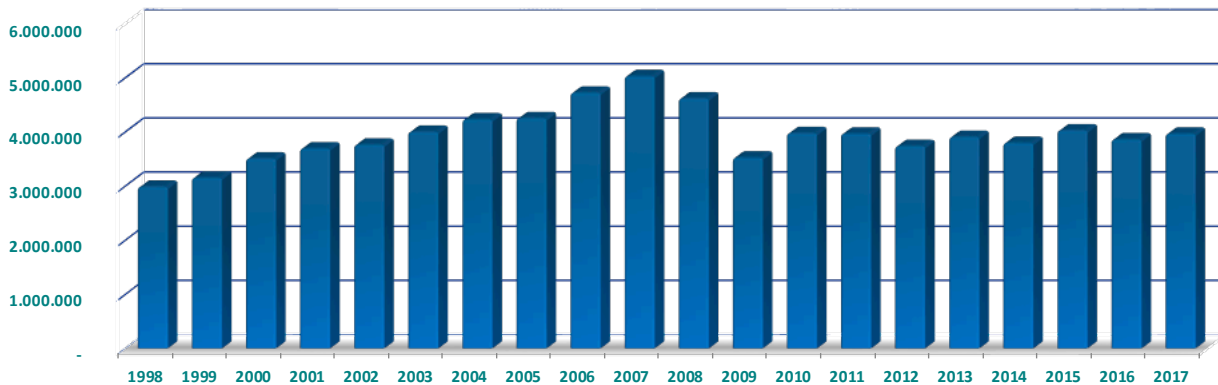
An aerial photograph of a dense traffic jam on a multi-lane road. The cars are packed closely together, filling the entire frame. A large, stylized orange number '8' with a dark blue outline is superimposed in the upper right quadrant of the image. The cars are in various colors, including white, silver, black, and blue. The perspective is from directly above, looking down on the vehicles.

8

anexos gráficos
data charts

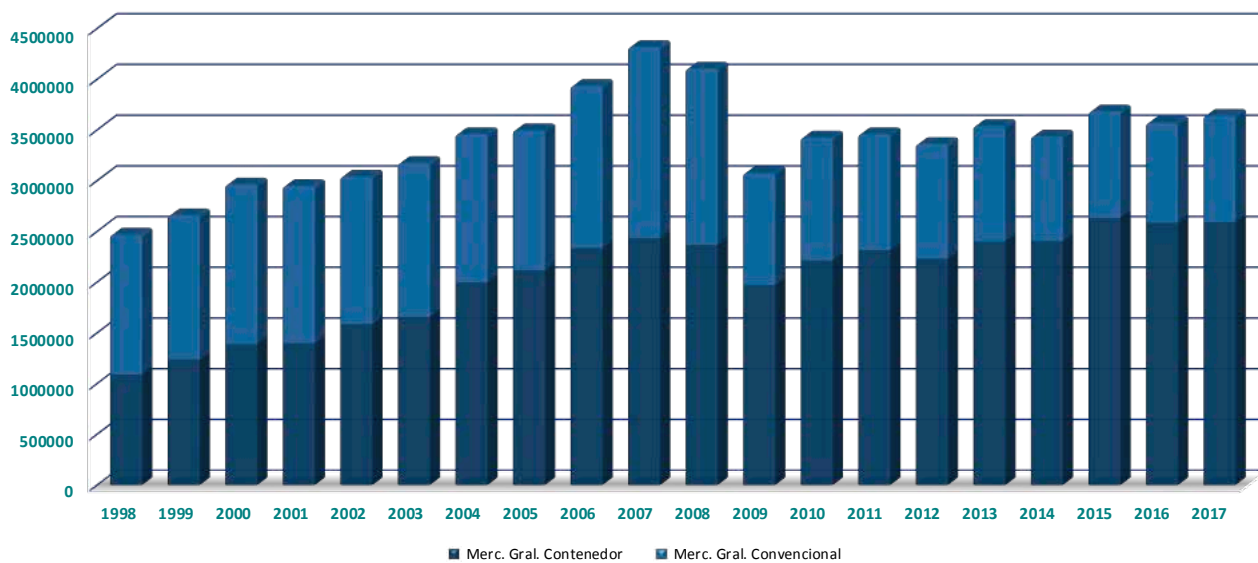
Tráfico total de mercancías

Evolución del Tráfico Total de Mercancías (tons)



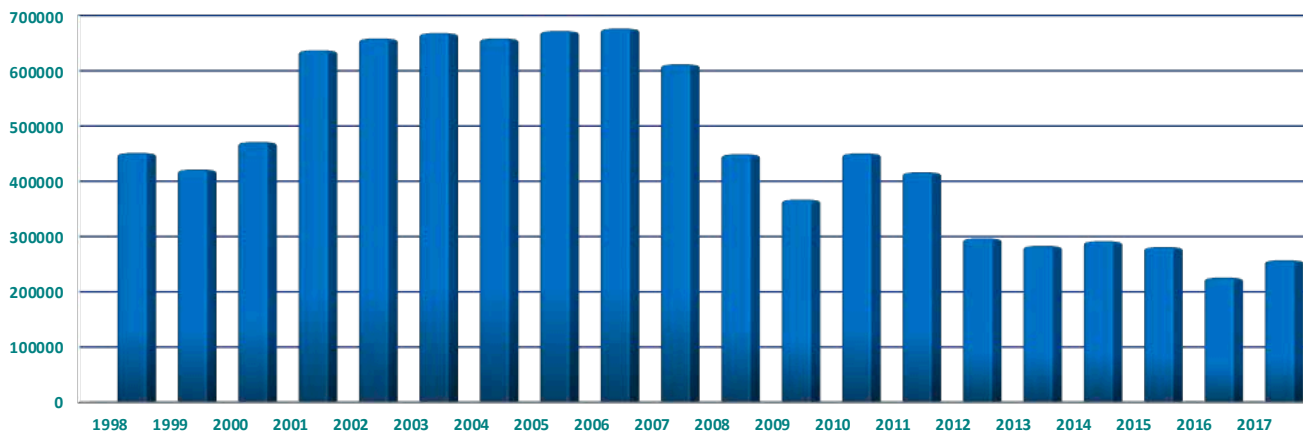
Mercancía general diversa

Evolución del tráfico de mercancía general diversa, en contenedor y convencional (tons)



Graneles sólidos por instalación especial

Evolución del tráfico de graneles sólidos por instalación especial (tons)



8.1

Tráfico total de mercancías

Total cargo traffic

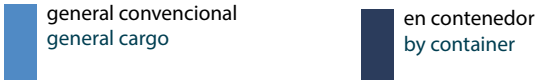
año / year	Total toneladas / tons
1998	2.987.626
1999	3.154.201
2000	3.508.436
2001	3.694.509
2002	3.763.947
2003	4.001.978
2004	4.231.403
2005	4.252.198
2006	4.724.114
2007	5.030.144

año / year	Total toneladas / tons
2008	4.618.751
2009	3.525.850
2010	3.977.340
2011	3.968.908
2012	3.738.126
2013	3.906.563
2014	3.797.499
2015	4.027.462
2016	3.861.603
2017	3.967.226

8.2

Mercancía general diversa

Breakbulk cargo


 general convencional
general cargo

 en contenedor
by container

año / year	contenedor container	convencional general	TOTAL
1998	1.088.184	1.377.878	2.466.062
1999	1.235.556	1.420.471	2.656.027
2000	1.385.630	1.574.035	2.959.665
2001	1.396.639	1.548.386	2.945.025
2002	1.583.908	1.454.014	3.037.922
2003	1.654.004	1.517.729	3.171.733
2004	1.996.240	1.460.317	3.456.557
2005	2.114.849	1.380.267	3.495.116
2006	2.334.121	1.598.869	3.932.990
2007	2.430.655	1.884.900	4.315.555

año / year	contenedor container	convencional general	TOTAL
2008	2.364.847	1.737.555	4.102.402
2009	1.968.975	1.104.411	3.073.386
2010	2.212.671	1.210.710	3.423.381
2011	2.313.917	1.142.579	3.456.496
2012	2.228.406	1.131.219	3.359.625
2013	2.396.810	1.140.246	3.537.056
2014	2.402.495	1.031.075	3.433.570
2015	2.630.832	1.049.111	3.679.943
2016	2.584.834	981.407	3.566.241
2017	2.590.411	1.047.428	3.637.840

8.3

Graneles sólidos por instalación especial

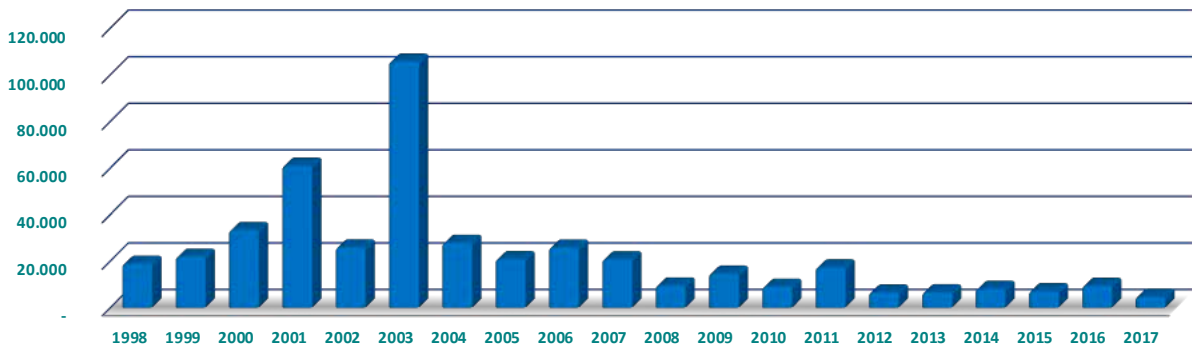
Solid bulks by special installation

año / year	Total toneladas / tons
1998	451.196
1999	421.262
2000	471.017
2001	636.923
2002	658.300
2003	668.103
2004	658.391
2005	671.834
2006	676.266
2007	611.601

año / year	Total toneladas / tons
2008	448.882
2009	366.891
2010	450.329
2011	416.193
2012	296.801
2013	283.089
2014	291.446
2015	281.026
2016	225.679
2017	257.087

Graneles sólidos sin instalación especial

Evolución del tráfico de graneles sólidos sin instalación especial (tons)



8.5

Contenedores manipulados con grúa

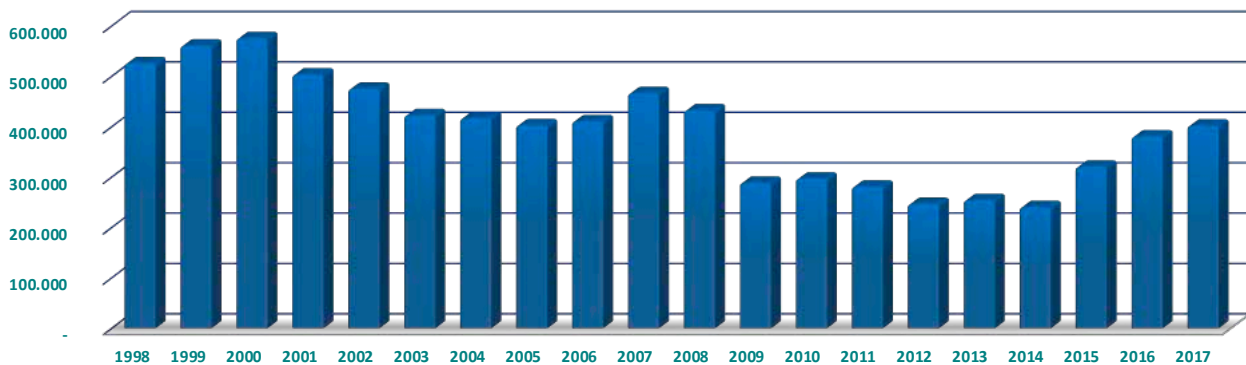
Containers handled by crane

año / year	Total toneladas / tons
1998	562.509
1999	674.973
2000	810.263
2001	893.294
2002	1.109.021
2003	1.231.523
2004	1.579.654
2005	1.712.288
2006	1.923.748
2007	1.964.370

año / year	Total toneladas / tons
2008	1.932.621
2009	1.680.527
2010	1.916.075
2011	2.033.221
2012	1.982.059
2013	2.142.918
2014	2.162.285
2015	2.310.672
2016	2.204.548
2017	2.188.502

Contenedores RO-RO

Evolución del tráfico de contenedores RO-RO (tons)



8.4

Graneles sólidos sin instalación especial

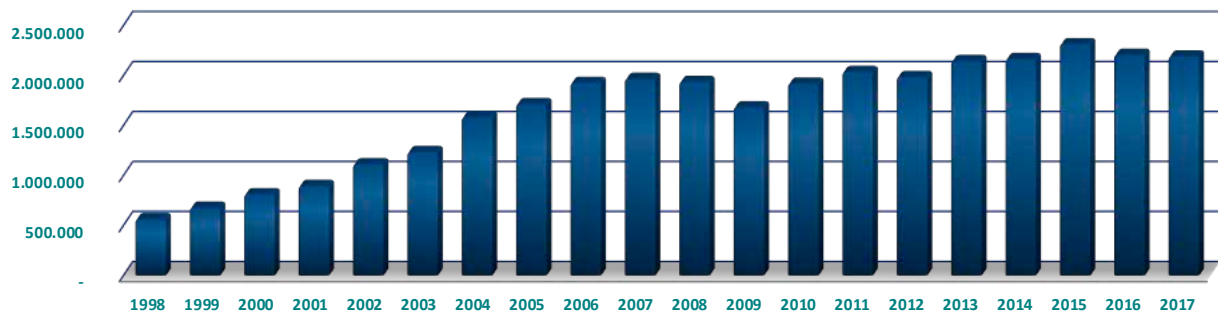
Solid bulks without special installation

año / year	Total toneladas / tons
1998	18.685
1999	21.692
2000	33.154
2001	60.835
2002	25.694
2003	105.538
2004	27.652
2005	20.701
2006	25.633
2007	20.625

año / year	Total toneladas / tons
2008	9.298
2009	14.411
2010	8.810
2011	17.127
2012	6.331
2013	6.389
2014	7.885
2015	6.913
2016	9.231
2017	4.522

Contenedores manipulados con grúa

Evolución del tráfico de contenedores manipulados con grúa (toneladas)



8.6

Contenedores RO-RO

RO-RO Containers

año / year	Total toneladas / tons
1998	525.675
1999	560.583
2000	575.367
2001	503.345
2002	474.887
2003	422.481
2004	416.586
2005	402.561
2006	410.373
2007	466.285

año / year	Total toneladas / tons
2008	432.226
2009	288.448
2010	296.596
2011	280.696
2012	246.347
2013	253.892
2014	240.210
2015	320.160
2016	380.286
2017	401.909

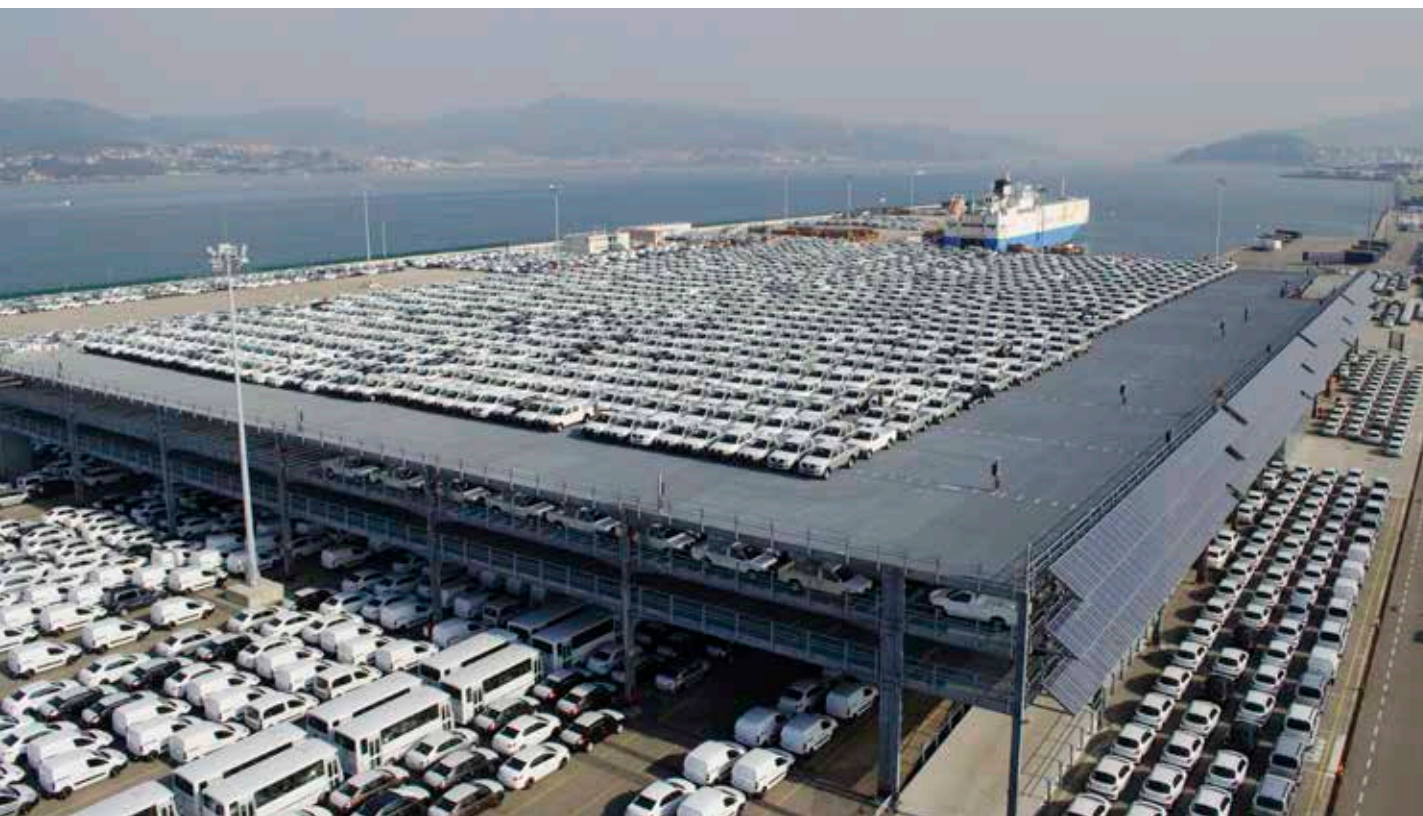
8.7

Automóviles

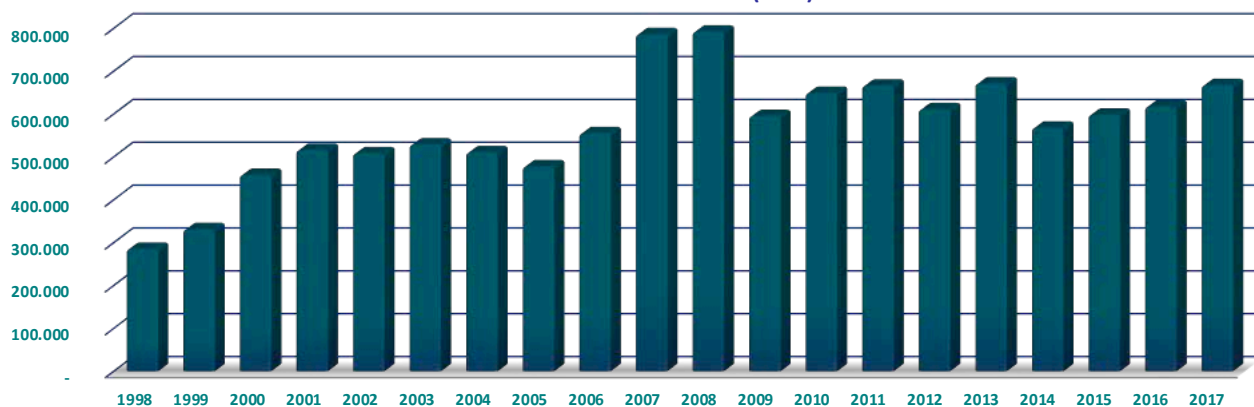
Automobiles

año / year	Total toneladas / tons
1998	284.706
1999	330.391
2000	457.400
2001	515.337
2002	507.532
2003	528.063
2004	509.845
2005	477.065
2006	554.363
2007	785.543

año / year	Total toneladas / tons
2008	791.273
2009	594.352
2010	648.296
2011	665.511
2012	610.268
2013	670.498
2014	567.272
2015	597.745
2016	616.640
2017	666.709



Evolución del tráfico de automóviles (tons)



8.8

Pesca fresca, salada y congelada

Fresh, frozen and salt fish

año / year	Total toneladas / tons
1998	556.238
1999	550.870
2000	555.484
2001	563.637
2002	560.227
2003	671.610
2004	656.754
2005	720.800
2006	786.049
2007	732.951

año / year	Total toneladas / tons
2008	751.966
2009	697.259
2010	788.394
2011	780.472
2012	803.357
2013	751.246
2014	783.088
2015	745.087
2016	707.916
2017	743.854



Evolución del tráfico de pesca fresca, salada y congelada (tons)

